

**S  
A  
M  
P  
L  
E  
B  
A  
L  
L  
O  
T**

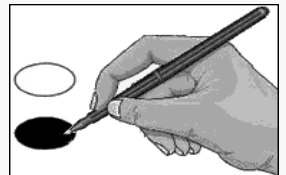
**Sample Ballot**  
Alexander County, North Carolina  
November 3, 2020



**B0009**

**BALLOT MARKING INSTRUCTIONS:**

- A. With the marking device provided or a black ball point pen, completely fill in the oval to the left of each candidate or selection of your choice as shown.
- B. Where authorized, you may write in a candidate by filling in the oval and writing the name on the Write-in line.
- C. If you tear, deface or wrongly mark this ballot, return it to request a replacement.



FEDERAL OFFICES	STATE OFFICES	NC Commissioner of Insurance (You may vote for ONE)
<b>President and Vice President of the United States</b> (You may vote for ONE)	<b>NC Governor</b> (You may vote for ONE)	<input type="radio"/> <b>Mike Causey</b> Republican <input type="radio"/> <b>Wayne Goodwin</b> Democrat
<input type="radio"/> <b>Donald J. Trump</b> <b>Michael R. Pence</b> Republican <input type="radio"/> <b>Joseph R. Biden</b> <b>Kamala D. Harris</b> Democrat <input type="radio"/> <b>Don Blankenship</b> <b>William Mohr</b> Constitution <input type="radio"/> <b>Howie Hawkins</b> <b>Angela Walker</b> Green <input type="radio"/> <b>Jo Jorgensen</b> <b>Jeremy (Spike) Cohen</b> Libertarian <input type="radio"/> Write-in	<input type="radio"/> <b>Al Pisano</b> Constitution <input type="radio"/> <b>Roy Cooper</b> Democrat <input type="radio"/> <b>Steven J. DiFiore</b> Libertarian <input type="radio"/> <b>Dan Forest</b> Republican	<b>NC Commissioner of Labor</b> (You may vote for ONE)
	<b>NC Lieutenant Governor</b> (You may vote for ONE)	<input type="radio"/> <b>Josh Dobson</b> Republican <input type="radio"/> <b>Jessica Holmes</b> Democrat
<b>US Senate</b> (You may vote for ONE)	<b>NC Attorney General</b> (You may vote for ONE)	<b>NC Secretary of State</b> (You may vote for ONE)
<input type="radio"/> <b>Thom Tillis</b> Republican <input type="radio"/> <b>Shannon W. Bray</b> Libertarian <input type="radio"/> <b>Cal Cunningham</b> Democrat <input type="radio"/> <b>Kevin E. Hayes</b> Constitution	<input type="radio"/> <b>Jim O'Neill</b> Republican <input type="radio"/> <b>Josh Stein</b> Democrat	<input type="radio"/> <b>E.C. Sykes</b> Republican <input type="radio"/> <b>Elaine Marshall</b> Democrat
<b>US House of Representatives District 5</b> (You may vote for ONE)	<b>NC Auditor</b> (You may vote for ONE)	<b>NC Superintendent of Public Instruction</b> (You may vote for ONE)
<input type="radio"/> <b>David Wilson Brown</b> Democrat <input type="radio"/> <b>Virginia Foxx</b> Republican <input type="radio"/> <b>Jeff Gregory</b> Constitution	<input type="radio"/> <b>Anthony Wayne (Tony) Street</b> Republican <input type="radio"/> <b>Beth A. Wood</b> Democrat	<input type="radio"/> <b>Catherine Truitt</b> Republican <input type="radio"/> <b>Jen Mangrum</b> Democrat
	<b>NC Commissioner of Agriculture</b> (You may vote for ONE)	<b>NC Treasurer</b> (You may vote for ONE)
	<input type="radio"/> <b>Steve Troxler</b> Republican <input type="radio"/> <b>Jenna Wadsworth</b> Democrat	<input type="radio"/> <b>Ronnie Chatterji</b> Democrat <input type="radio"/> <b>Dale R. Folwell</b> Republican
		<b>NC Supreme Court Chief Justice Seat 1</b> (You may vote for ONE)
		<input type="radio"/> <b>Cheri Beasley</b> Democrat <input type="radio"/> <b>Paul Newby</b> Republican
		<b>Continue voting next side</b>

**-- VOTE BOTH SIDES --**

D	PCT T1T4T5	E	TAYLORSVILLE 1 4 5	F	
<b>NC Supreme Court Associate Justice Seat 2</b> (You may vote for ONE)		<b>NC State Senate District 42</b> (You may vote for ONE)		<b>District Attorney District 32</b> (You may vote for ONE)	
<input type="radio"/> <b>Phil Berger, Jr.</b> Republican <input type="radio"/> <b>Lucy Inman</b> Democrat		<input type="radio"/> <b>H. Dean Proctor</b> Republican <input type="radio"/> <b>Tina R. Miles</b> Democrat		<input type="radio"/> <b>Sarah Kirkman</b> Republican	
<b>NC Supreme Court Associate Justice Seat 4</b> (You may vote for ONE)		<b>NC House of Representatives District 94</b> (You may vote for ONE)		<b>COUNTY OFFICES</b>	
<input type="radio"/> <b>Tamara Barringer</b> Republican <input type="radio"/> <b>Mark Davis</b> Democrat		<input type="radio"/> <b>Jeffrey Elmore</b> Republican		<b>Board of Commissioners</b> (You may vote for TWO)	
<b>NC Court of Appeals Judge Seat 4</b> (You may vote for ONE)		<b>DISTRICT OFFICES</b>		<input type="radio"/> <b>Jeffrey P. Peal</b> Republican <input type="radio"/> <b>Macy Jones</b> Democrat <input type="radio"/> <b>Josh Lail</b> Republican	
<input type="radio"/> <b>Tricia Shields</b> Democrat <input type="radio"/> <b>April C. Wood</b> Republican		<b>NC Superior Court Judge District 22A Seat 2</b> (You may vote for ONE)		<b>NONPARTISAN OFFICES</b>	
<b>NC Court of Appeals Judge Seat 5</b> (You may vote for ONE)		<b>NC District Court Judge District 22A Seat 2</b> (You may vote for ONE)		<b>Soil and Water Conservation District Supervisor</b> (You may vote for ONE)	
<input type="radio"/> <b>Lora Christine Cabbage</b> Democrat <input type="radio"/> <b>Fred Gore</b> Republican		<input type="radio"/> <b>Rob Young</b> Republican		<input type="radio"/> <b>Colby Herman</b>	
<b>NC Court of Appeals Judge Seat 6</b> (You may vote for ONE)		<b>NC District Court Judge District 22A Seat 3</b> (You may vote for ONE)		<input type="radio"/> _____ Write-in	
<input type="radio"/> <b>Gray Styers</b> Democrat <input type="radio"/> <b>Chris Dillon</b> Republican		<input type="radio"/> <b>Dale Graham</b> Republican		<b>End of Ballot</b>	
<b>NC Court of Appeals Judge Seat 7</b> (You may vote for ONE)		<input type="radio"/> <b>Edward Lawrence Hedrick IV</b> Republican			
<input type="radio"/> <b>Reuben F. Young</b> Democrat <input type="radio"/> <b>Jeff Carpenter</b> Republican		<b>NC District Court Judge District 22A Seat 4</b> (You may vote for ONE)			
		<input type="radio"/> <b>Christine Underwood</b> Republican			
<b>NC Court of Appeals Judge Seat 13</b> (You may vote for ONE)		<b>NC District Court Judge District 22A Seat 5</b> (You may vote for ONE)			
<input type="radio"/> <b>Chris Brook</b> Democrat <input type="radio"/> <b>Jefferson G. Griffin</b> Republican		<input type="radio"/> <b>Edward Lawrence Hedrick IV</b> Republican			
		<b>NC District Court Judge District 22A Seat 6</b> (You may vote for ONE)			
		<input type="radio"/> <b>Bryan A. Corbett</b> Republican			
D		E	North Carolina	F	Ballot Style B0009

S  
A  
M  
P  
L  
E  
  
B  
A  
L  
L  
O  
T

-- VOTE BOTH SIDES --