

# **ALEXANDER COUNTY SAFETY ORIENTATION PROGRAM**

# PURPOSE

- Establish safe working environment
- D.O.L. Requirements
- NCACC Requirements

# MINIMUM REQUIREMENTS

- ❖ Claims management
- ❖ EAP
- ❖ Departmental inspections
- ❖ Departmental safety training
- ❖ Safety orientation program

# RESPONSIBILITIES

- Management and Employee Support
- Safety Team
- Safety Coordinators
- Safety Responders

# BLOODBORNE PATHOGEN PRECAUTIONS

- HIV, Hepatitis B and C carried in blood and body fluids
- Assume any injured person may be infected
- Avoid getting blood or body fluids on your skin, especially your nose, eyes or mouth
- Immediately wash with soap and water and flush eyes with running water
- Remove and bag clothes splattered with blood
- Wear gloves, leak proof shield or appropriate PPE
- Report exposure immediately
- Only trained personnel are to clean up spills of blood and bodily fluids.

# PERSONAL PROTECTIVE EQUIPMENT

- Hard hats
- Safety glasses, goggles and face shields
- Earmuffs and earplugs
- Respirators
- Gloves
- Boots, shoes and guards

**\*\*PPE is NOT Optional\*\***

# FIRST AID

- Assigned First Aid Responders at each location
- First Aid supplies readily available
- Responder will provide minor medical treatment for cuts, scratches, etc. (INJURY MUST STILL BE REPORTED)

# LOCKOUT / TAGOUT

*Used when Equipment is not in Normal Operating Condition:*

- No person should perform maintenance on equipment without proper training
- A tag/lock will be used to immobilize the equipment
- When tag/lock is attached, do not operate equipment
- Tags/locks are to be removed by the responsible person ONLY





**DANGER**

**THIS TAG & LOCK  
TO BE REMOVED  
ONLY BY THE  
PERSON SHOWN  
ON BACK**



**DANGER**

**EQUIPMENT  
LOCKED OUT BY**

---

---

---

---

---

---

**DATE** \_\_\_\_\_



**DANGER**

THIS TAG IS ON THE BACK  
SHOW IT ON BACK

# HAZARDOUS COMMUNICATIONS

- Hazardous chemicals in the workplace
- Right to Know
- Questions on chemicals – see HR, Supervisor, Safety Coordinator

# MATERIAL SAFETY DATA SHEETS

- Sheets are available on all hazardous chemicals
- Contains basic information such as: name of product, hazardous ingredients, primary entry into the body, etc.
- Details about hazards, storage and handling
- Exposure limits
- Recommended personal protective equipment (PPE)
- Emergency response information
- Medical reactions, health hazards, and special precautions
- Location of MSDS Sheets

# MATERIAL SAFETY DATA SHEET

Date Revised: AUG 1999  
Supersedes: OCT 1998

Information on this form is furnished solely for the purpose of compliance with the Occupational Safety and Health Act and shall not be used for any other purpose. The Gorilla Group urges the customers receiving this Material Safety Data Sheet to study it carefully to become aware of the hazards, if any, of the product involved. In the interest of safety, you should notify your employees, agents and contractors of the information on this sheet.

## SECTION I

**MANUFACTURER'S NAME**The Gorilla Group  
ADDRESS  
122 Powers Avenue, Santa Barbara, CA 93103**Transportation Emergencies:**

CHEMTREC:

Medical Emergencies:

Business: (805) 963-2234

**CHEMICAL NAME and FAMILY**

Mixture of Polyvinyl Chloride and Cyclic Amine

**TRADE NAME:**

Gorilla PVC Plastic Pipe Cement

FORMULA: Proprietary

## SECTION II - HAZARDOUS INGREDIENTS

None of the ingredients below are listed as carcinogens by IARC, NTP or OSHA

	CAS#	APPROX %	ACGIH-TLV	ACGIH-STEL	OSHA-PEL	OSHA-STEL
Polyvinyl Chloride Resin	NON/HAZ		N/A		N/A	
N-Methylpyrrolidinone	872-50-4	>85*	N/E		N/E	

N/E = Not Established; N/A = Not Applicable

\*Title III Section 313 Supplier Notification: This product contains toxic chemicals subject to the reporting requirements of Section 313 of the Emergency Planning and Community Right-to-Know Act of 1986 and of 40CFR372. This information must be included in all MSDS's that are copied and distributed for this material.

**SHIPPING INFORMATION FOR CONTAINERS ≥ ONE GALLON**DOT Shipping Name: Not regulated  
DOT Hazard Class:  
Identification Number:  
Packaging Group:  
Label Required: None**SPECIAL HAZARD DESIGNATIONS**

	HMIS	NFPA	HAZARD RATING
HEALTH:	2	2	0 - MINIMAL
FLAMMABILITY:	0	0	1 - SLIGHT
REACTIVITY:	0	0	2 - MODERATE
PROTECTIVE:			3 - SERIOUS
EQUIPMENT:	H		4 - SEVERE

**SHIPPING INFORMATION FOR CONTAINERS < ONE GALLON**DOT Shipping Name: Not regulated  
DOT Hazard Class:

## SECTION III - PHYSICAL DATA

**APPEARANCE**

Clear, syrupy liquid

**ODOR**

Amine

**BOILING POINT (°F/°C)**

202°F Based on N-Methylpyrrolidinone

**SPECIFIC GRAVITY @ 73 ± 2°F**

Typical 1.10 ± 0.040

**VAPOR PRESSURE (mm Hg.)**

&lt;1 millibar @ 20°C based on N-Methylpyrrolidinone

**PERCENT VOLATILE BY VOLUME (%)**

Approx: 80 - 90%

**VAPOR DENSITY (Air = 1)**

3.4

**EVAPORATION RATE (BUAC = 1)**

N/A

**SOLUBILITY IN WATER**

Solvent - complete; Resin precipitates.

VOC STATEMENT: VOC as manufactured: 920 Grams/Liter. Maximum VOC emission per SCAQMD Rule 1168, Test Method 316A: 510 Grams/Liter. This product contains only 428 Grams/Liter VOC emissions as tested.

## SECTION IV - FIRE AND EXPLOSION HAZARD DATA

**FLASH POINT**

91°C (ASTMD-93-73) Based on N-MP

**FLAMMABLE LIMITS**

(PERCENT BY VOLUME)

**LEL**

1.3

**UEL**

9.5

**FIRE EXTINGUISHING MEDIA**

In case of fire, use water, fog, foam, carbon dioxide or dry chemical.

**SPECIAL FIRE FIGHTING PROCEDURES**

Fire fighters should be equipped with self-contained breathing apparatus and turn-out gear.

**UNUSUAL FIRE AND EXPLOSION HAZARDS**

Low, when exposed to heat or flames. Can react with oxidizing materials.

# LABEL INFORMATION

- Chemical name or identity
- Hazard warnings
- Name and address of manufacturer
- Labels shall not be removed or defaced on incoming containers
- Labels must be readable at all times
- Other warnings may also be used such as symbols or number rating systems
- Must have label on all chemicals in the workplace

**DELCO**  
CLEANING SYSTEMS

# DNB-1430

## DESCRIPTION

DNB 1430 is a heavy duty liquid cleaner formulated mainly for the transportation industry, although it is used successfully in many industries. It offers a combination of emulsifiers, solvents, and highly alkaline builders that penetrate and route out heavy grease, soil and grime. DNB 1430 is designed for the heavier soil loads that your lower alkaline products will not remove. It is an ideal cleaner for tractor trailers and heavy duty concrete cleaning.

## MIXING INSTRUCTIONS

- (1) Wear rubber gloves, face shield, and protective clothing while mixing in a plastic or steel 55 gallon drum using a pressure washer for water and agitation.
- (2) Using a 55 gallon drum to mix your chemical, start by adding 18 gallons (1/3 full) of cold water to the drum.
- (3) While adding the next 18 gallons (2/3 full) of cold water with the pressure washer slowly add the DNB-1430 "POWDER".  
The best results are when the powder enters the water near the nozzle. KEEP THE NOZZLE UNDER THE WATER.
- (4) While adding the next 15 gallons of cold water with the pressure washer slowly add the DNB-1430 "LIQUID" near the nozzle.

This makes R-430 Liquid Concentrate.

## DIRECTIONS

- **TRAILER CLEANING:** Set metering valve to deliver from (100 to 1) to (50 to 1) depending on soil and grease conditions.
- **HEAVY DUTY STEAM CLEANING:** Set metering valve on equipment to 30 to 1.
- **PRESOAK:** Mix concentrate 4 to 1 with water then prespray or hand scrub. Excellent on diesel smoke. Follow up with regular truck or car wash detergent (Example - R109 Delco Red).
- **TWO STEP SYSTEMS:** Use as step number 1, mix concentrate 3 to 1.
- **CONCRETE CLEANING:** Set metering valve 30 to 1. Prespray oil spots at 4 to 1.

## CAUTION

DNB-1430 contains sodium hydroxide. Do not get in eyes, on skin, or on clothing. Inhalation of high mist concentrations may be irritating. When handling, wear rubber gloves, eye glasses, and protective clothing.

## FOR INDUSTRIAL USE ONLY

Distributed By  
Delco Cleaning Systems  
2513 Warfield St., Ft. Worth, TX 76106  
817-625-4213

U. S. WATS 1-800-433-2113 • FAX 817-625-2059

MEXICO WATS 95-800-433-2113

email:delco@dcs1.com • URL:http://www.dcs1.com



**HEALTH**

**3**

**FLAMMABILITY**

**0**

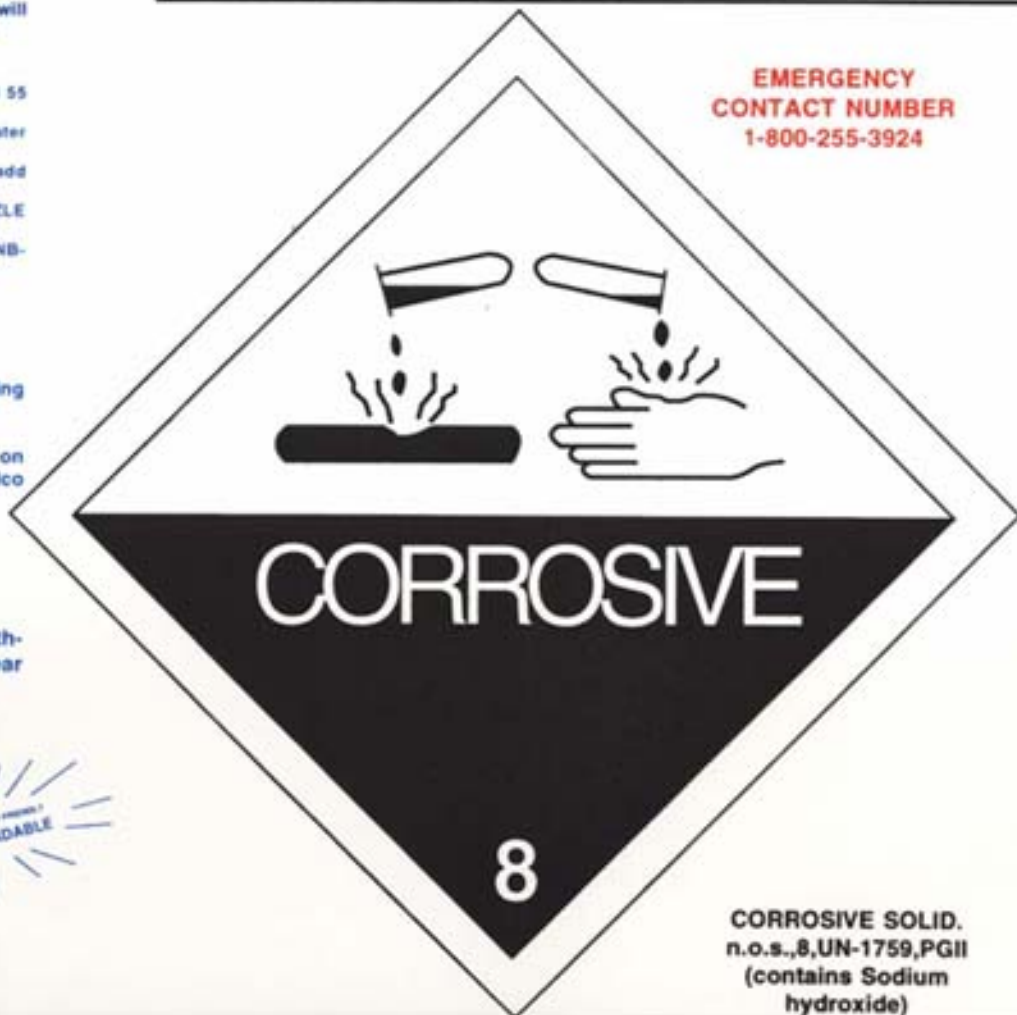
**REACTIVITY**

**2**

**PERSONAL PROTECTION**

**COR**

**EMERGENCY  
CONTACT NUMBER  
1-800-255-3924**



**CORROSIVE SOLID.  
n.o.s.,8,UN-1759,PGII  
(contains Sodium  
hydroxide)**


# HEALTH HAZARD

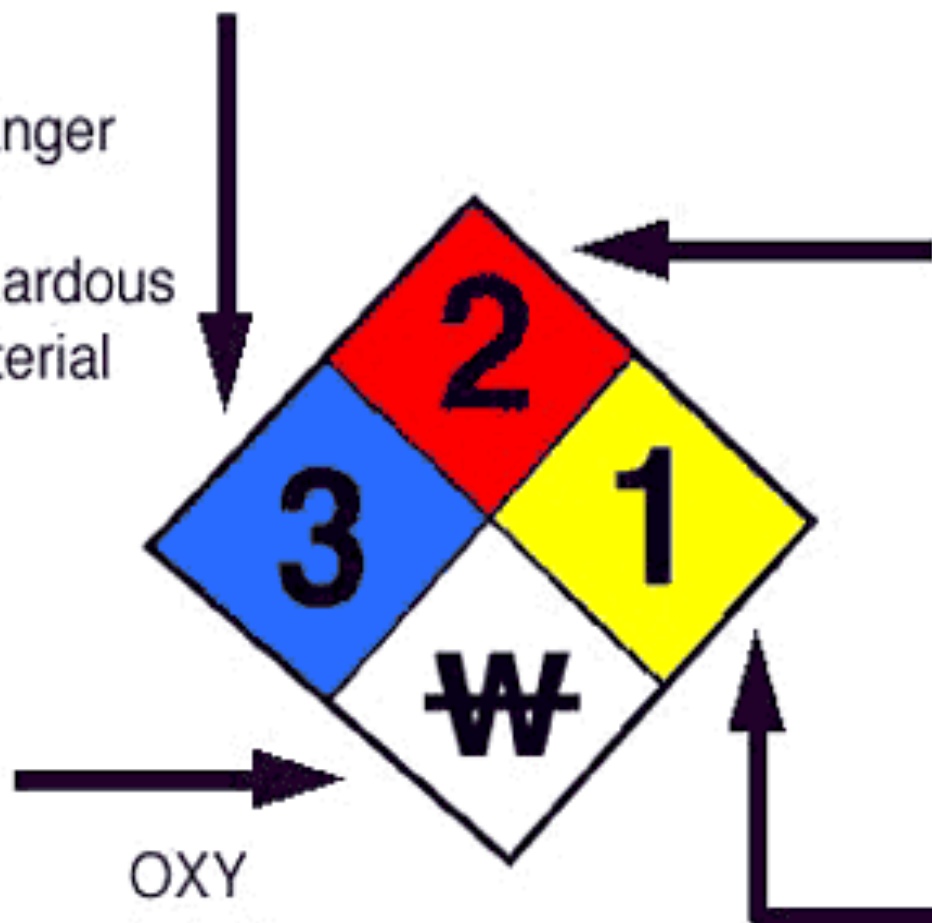
- 4 - Deadly
- 3 - Extreme danger
- 2 - Hazardous
- 1 - Slightly hazardous
- 0 - Normal material

# FIRE HAZARD

- Flash Point
- 4 - Below 73° F
  - 3 - Below 100° F
  - 2 - Below 200° F
  - 1 - Above 200° F
  - 0 - Will not burn

# SPECIFIC HAZARD

- |                  |                                                                                     |
|------------------|-------------------------------------------------------------------------------------|
| Oxidizer         | OXY                                                                                 |
| Acid             | ACID                                                                                |
| Alkali           | ALK                                                                                 |
| Corrosive        | COR                                                                                 |
| Use NO WATER     | <del>W</del>                                                                        |
| Radiation Hazard |  |

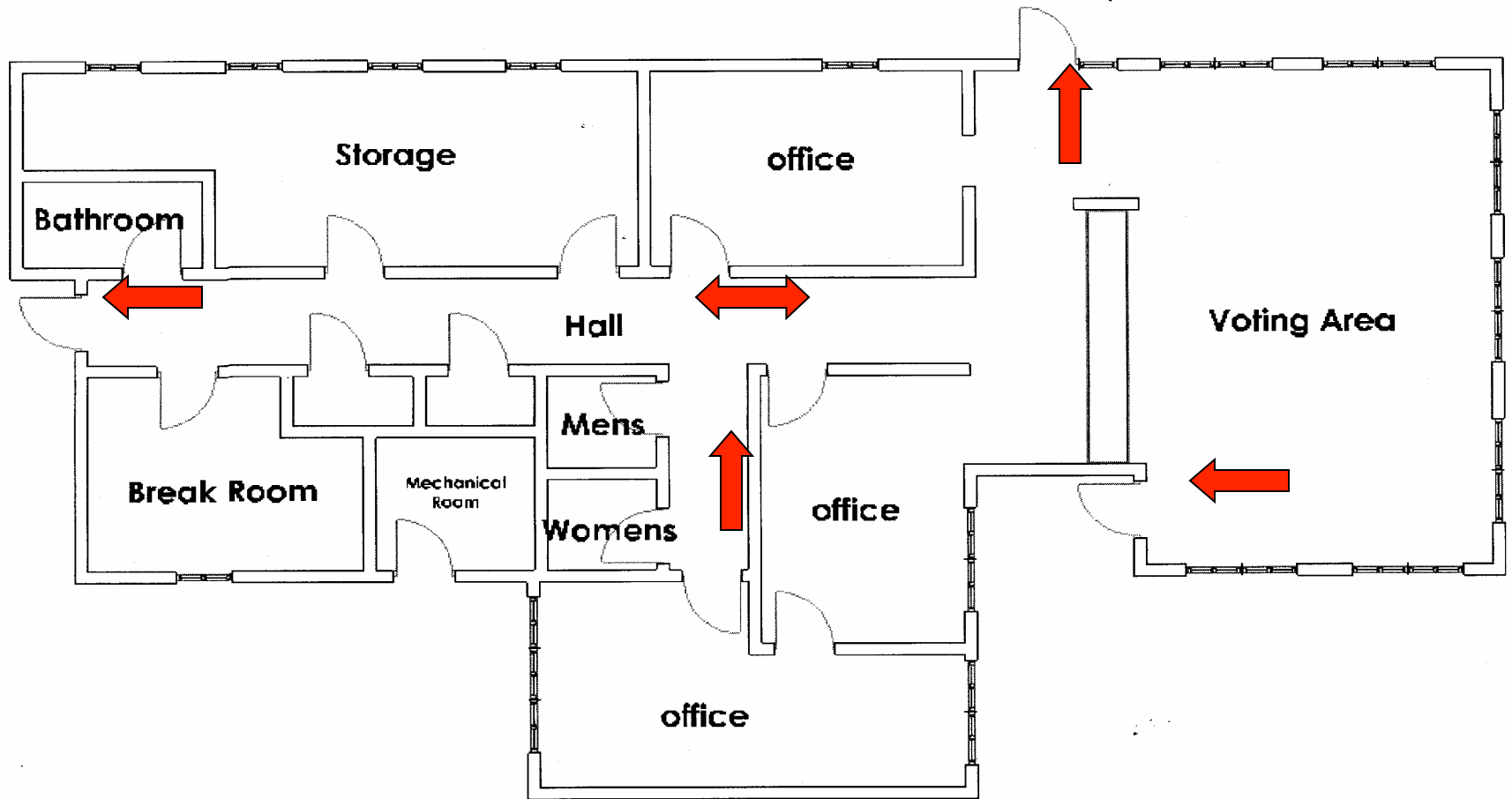


# REACTIVITY

- 4 - May detonate
- 3 - Shock and heat may detonate
- 2 - Violent Chemical change
- 1 - Unstable if heated
- 0 - Stable



# EMERGENCY EVACUATION PLAN



# MOTOR VEHICLE POLICY

- All occupants must wear seatbelts
- Abide by all traffic regulations
- Must be properly licensed to operate County vehicle
- Do not pick up hitch hikers
- Report all traffic violations immediately
- County vehicles are not to be operated by non-employees (exception = first responders)
- Never take strong medications while operating vehicle

# MOTOR VEHICLE ACCIDENT REPORTING

- Report accidents involving County owned vehicles or personal vehicles being used for work immediately, whether or not it results in an injury
- All County employees involved in a motor vehicle accident must be drug and alcohol tested whether or not it results in an injury
- Notify Law Enforcement immediately

# REPORTING OF ACCIDENTS

- Report accidents immediately
- First Report and Incident Investigation to be completed within 24 hours
- Medical treatment must be approved by HR (excluding life threatening or after hour accidents)

# WORKPLACE VIOLENCE

## *Causes of Violence:*

- Layoff / Firing / Receiving Discipline
- Bad behavior warning
- Poor performance review
- Conflict with co-worker
- Domestic violence
- Disputes with ex-partners
- Alcohol or drug abuse
- Emotional problems
- Financial difficulties

# WORKPLACE VIOLENCE

## *Workplace Behavior:*

- Threatens violence or to “get even”
- Raising voice
- Abusive language
- Tries repeatedly to intimidate
- Talks a lot about weapons
- States others are “out to get them”
- Holds grudges
- Blames others for problems
- Displays frequent, unreasonable anger
- Combines disturbing behavior with substance abuse

# WORKPLACE VIOLENCE

## *Mail:*

- **SUSPICIOUS LETTERS**

- Don't open

- Place in plastic container

- Isolate it from everyone

- Report to management

- **UNEXPECTED PACKAGES**

- Report unattended objects

- Look for bad or missing addresses, oily stains, and lopsided shapes

# WORKPLACE VIOLENCE

## *Take Security Seriously:*

- Don't lend ID badges to others
- Keep security doors closed and locked
- Obey rules against weapons, drugs and alcohol at work
- Know security and police phone numbers
- Notify management of suspicious strangers in the workplace
- Keep personal valuables locked up
- Know emergency codes for your department



# WORKPLACE VIOLENCE

## *First Response:*

- **Do:**

- Remain calm

- Show respect

- Focus on the problem

- Alert co-workers

- Report the incident

- **Don't:**

- Argue or raise your voice

- Mimic an angry person's behavior

# WORKPLACE VIOLENCE

## *After Hours:*

- Let people know
- Avoid being alone
- Stay near phones
- Lock doors
- Walk out with someone
- Check car before getting in

# WORKPLACE VIOLENCE

## *Personal Security:*

- Keep vehicle doors locked
- Walk in busy, well-lit areas
- Walk purposefully
- Make eye contact
- Check surroundings
- Go into a store if followed
- Carry only the money needed
- Carry items close to your body
- Check vehicle before entering

# TEST YOUR KNOWLEDGE

1. A few drops of blood on my skin is not enough to put me at risk of infection by bloodborne pathogens.  
**False – The tiniest drops of blood can transmit a bloodborne infection.**
2. PPE is optional for experienced employees who have been doing their jobs for a long time.  
**False – PPE is required for certain jobs regardless of the employee's level of experience.**
3. A MSD Sheet includes details about a substance's hazards, storing and handling, exposure limits and recommended personal protective equipment.  
**True.**

4. Anyone is allowed to remove a lock or tag on equipment.  
**False – Only the person who placed the lock or tag on the equipment is authorized to remove it.**
  
5. You should report accidents to your supervisor within one week from the injury.  
**False – Report accident IMMEDIATELY.**
  
6. Vehicle accidents are to be reported immediately and all parties involved should seek drug and alcohol testing immediately whether the employees are injured or not.  
**True.**

7. Seat belts are optional when driving or riding in any vehicle on County business.

**False – Seat belts are required when driving or riding in any vehicle.**

8. If you have a damaged electrical cord, you should tape it up until maintenance can get it replaced.

**False – Discard cord and replace immediately.**

9. Life threatening accidents or accidents requiring medical attention after normal 8-5 working hours should wait until the next normal business day to seek medical treatment.

**False – Accidents occurring after 8-5 working hours or a life threatening accident should seek medical attention immediately through the nearest emergency room or urgent care. Accident should be reported on the next business day.**

10. Workplace violence cases are usually related to cost of living increases.

False – Workplace violence cases are related to layoffs, firing, discipline, emotional problems, domestic violence, conflicts with co-workers, financial difficulties, emotional problems, etc.

11. If you see a suspicious stranger, you should approach the stranger to see what they are up to.

False – You should notify management immediately and do not approach the stranger.

12. When working after hours, avoid being alone.

True.

13. MSDS sheets are available at each location for any employee to review and is maintained by the assigned safety coordinator for each department.

True.

14. If you receive a suspicious letter in the mail, open it to see what it is, take it around and discuss with other co-workers to determine if you need to report this to management.

False – Do not open any suspicious mail, isolate it from everyone and report to management immediately.

15. A first aid responder is trained in each department to administer basic first aid.

True.